

Sunday Lunch

“A Sunday well spent brings a week of content”

1 course £15.95 | 2 courses £19.95 | 3 courses £23.95

Kid's roast pork, with two scoops of ice cream for dessert £9.50

Crown Inn marinated mixed olives £4.50

Whole locally baked loaf, butter, olive oil and balsamic vinegar
£2.75 small, £4.75 large

Baked baby camembert with freshly baked baguette £6.50

Starters

Homemade soup of the day with garlic and herb croutons

Slow cooked ham hock croquettes, homemade apple and chilli jam

Chicken liver pate, red onion marmalade and granary toast

Oak smoked Scottish salmon, caper berries, lemon and buttered brown bread

Caramelised onion and goats cheese tart with balsamic syrup

Mains

(All served with fresh seasonal vegetables)

Roast local 30 day matured Longhorn beef (Willow Brook Farm) with Yorkshire pudding, duck fat roast potatoes and red wine gravy

Roast free range (Dingley dell) loin of pork, served with Yorkshire pudding, roasted potatoes and rich gravy

Traditional faggot, bubble and squeak, griddled smoked bacon and red wine gravy

Homemade Crown Inn fishcake, free range poached egg, garden pea veloute, watercress

Spicy black bean burger with tomato, mixed leaves and homemade chunky chips or French fries

Dessert

Sticky toffee pudding, rum and raisin ice cream and toffee sauce

Spotted dick with homemade vanilla custard

Vanilla cheesecake with blueberry compote

Homemade Bakewell tart with clotted cream

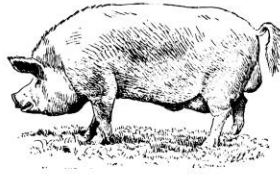
Selection of ice creams and sorbets

(Please enquire for available flavours)

A selection of English cheeses with homemade ale chutney, grapes and biscuits (£2 supplement)

THE CROWN INN

8 Duck Street, Elton, Peterborough, Cambridgeshire PE8 6RQ | 01832 280 232 | www.crowninnelton.co.uk



Sunday Lunch

“A Sunday well spent brings a week of content”

Tipplés

Fonseca Porto 10 year old tawny port £4.05 glass

Taylor's late bottled vintage port 2000 £4.05 glass

Croft Triple Crown £3.50 glass

Tea & Coffee

London Tea Company teas £2.00

English breakfast, Earl Grey, chamomile, lemon and ginger, green tea, Darjeeling, peppermint, peach and rhubarb, raspberry inferno

Hot chocolate £3.50

Espresso £2.00

Double espresso £3.00

Americano £3.00

Cappuccino £3.00

Latte £3.00

Liqueur Coffee

£6.50

Jameson's Irish Whiskey

Lamb's Dark Rum

Cointreau

Smirnoff Vodka

Disaronno

Tia Maria

Bell's Scotch whisky

Gordon's Gin

THE CROWN INN

8 Duck Street, Elton, Peterborough, Cambridgeshire PE8 6RQ | 01832 280 232 | www.crowninneton.co.uk